



TRACTION CATALOGUE

2015-2016
TRACTION CATALOGUE





NORDIC tire chains

engineered in Canada

NORDIC STUDDED HEAVY DUTY TRUCK CHAINS



NORDIC'S BEST STUDDED TRUCK CHAIN SERIES

- 8mm super alloy studded cross chains for deep lug traction tires.
- Oversized studs & deep carburization for maximum strength & durability.
- 10mm hardened bell-style hook keeps the cross chain stable on the tire.
- 8mm hardened side chain stands up to the stress of cross chain twists and pulls.
- 7mm lightweights have 6mm side chain & 8mm hooks for a super strong, ultra light weight chain.



	LIGHTWEIGHTS with Cams			HEAVY DUTY with Cams		
	Part #	Chain Size	Weight/Pr	Part #	Chain Size	Weight/Pr
SINGLES	343LWQC	7mm (7/32")	25Kg (55lbs)	343HDQC	8mm (5/16")	30Kg (66lbs)
	344LWQC	7mm (7/32")	26Kg (57lbs)	344HDQC	8mm (5/16")	33Kg (73lbs)
TRIPLES	743LWQC	7mm (7/32")	40Kg (89lbs)	743HDQC	8mm (5/16")	54Kg (120lbs)
	744LWQC	7mm (7/32")	45Kg (100lbs)	744HDQC	8mm (5/16")	59Kg (129lbs)

Includes Cam Locks and Tool
Allow an easy way to tighten slack in the chains.



Use Spider Tensioner #0218
Avoid tire chains slipping or loosening by using a spider tensioner.
SOLD SEPARATELY



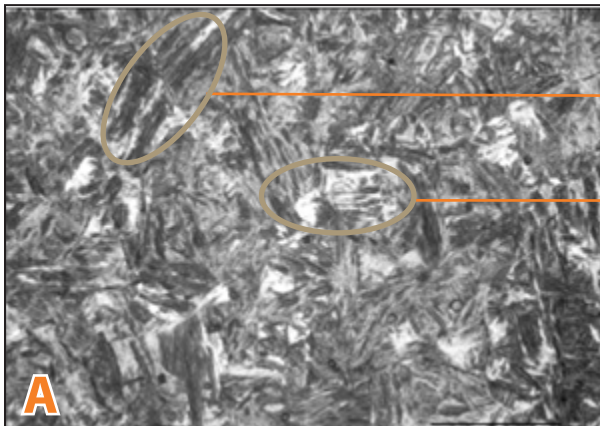
What to Look for in Premium Studded Truck Chains

The microstructure of a link of studded cross chain can give us a great deal of information about its quality. This information can confirm if there are any heat treating issues or material flaws. Consistency is important and indicates a stronger, longer wearing alloy. A consistent "martensitic structure" will show finer structures with smaller/shorter needles and less white areas. (see pictures A & B below)

When trying to gauge the strength of a studded chain you may also look at the hardness values. The chart below is a comparative hardness test provided by an independant lab... any values over 5.1 are classified as the case depth or carburization thickness. Find the distance from the surface hardness to the last figure above 5.1 to determine the case depth.

Inconsistent Core Microstructure

EUROPEAN COMPETITOR'S 8MM STUDED



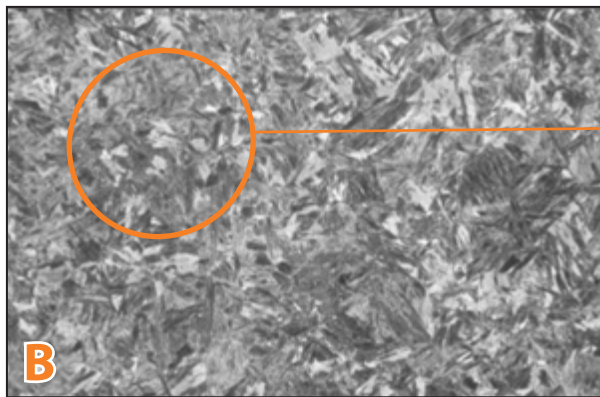
Long needles

Large, white carbide areas

Deepest Case Depth 0.5MM

Consistent Core Microstructure

NORDIC 8MM STUDED



Smaller, white carbide areas, shorter needles

HARDNESS TEST REPORT

DISTANCE FROM SURFACE MM (INCH)	A EUROPEAN COMPETITOR 8MM STUDED	B NORDIC 8MM STUDED
0.05	6.8	6.8
0.10	6.4	6.9
0.15	6.4	6.5
0.20	6.1	6.4
0.25 (0.010")	5.9	6.2
0.30	5.6	6.3
0.35	5.7	6.2
0.40	5.7	5.9
0.45	5.2	5.8
0.50 (0.020")	4.7	5.6
0.55	-	5.0
0.60	-	5.0
0.65	-	4.8
1.00 (0.042")	4.5	4.5
CORE	4.3	4.4

Nordic Studded Chains have deeper case hardening and more consistent core microstructure than the competition providing you with the **strongest, most durable studded product on the market.**

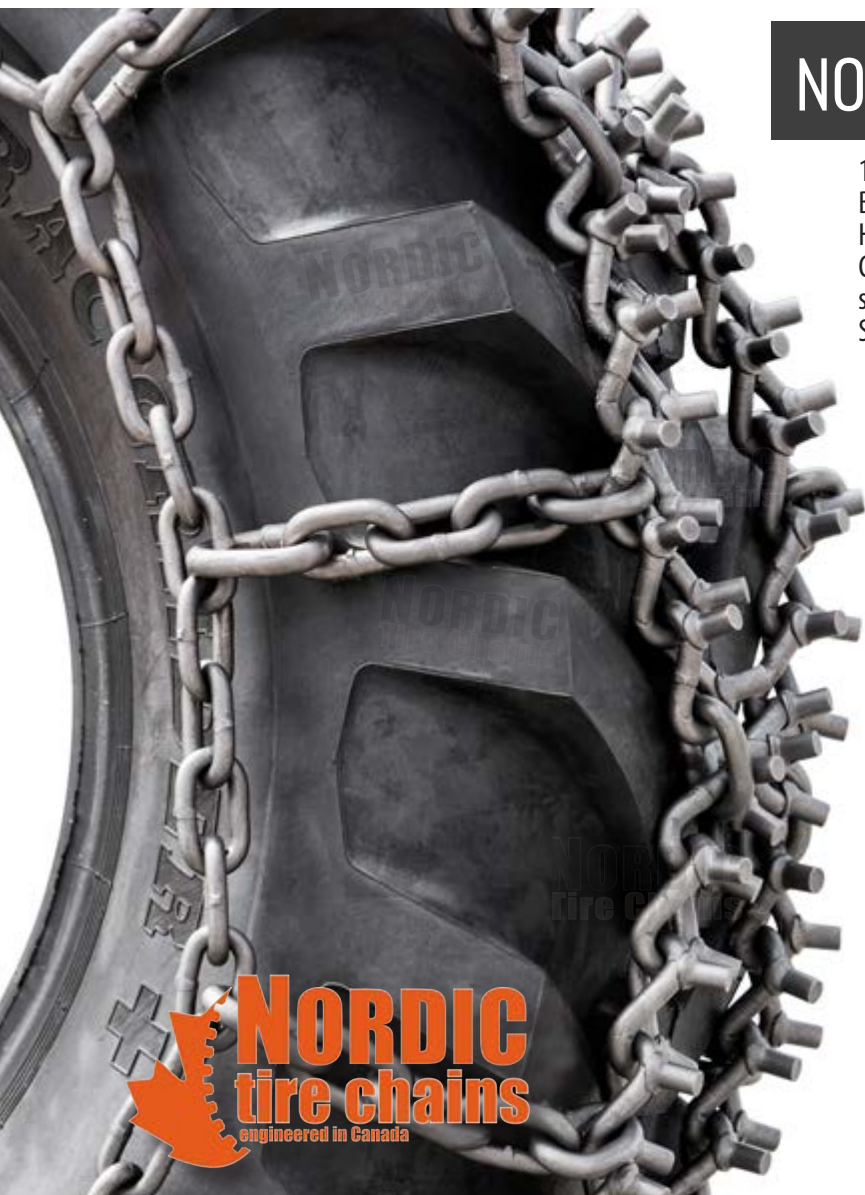


Above:
Close-up of our Nordic 8mm studs after 500 kms of use on a loaded tandem-trailer logging truck .



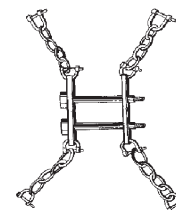
NORDIC SUPER GRIP STUDDED

10mm, 11mm, 13mm and 16mm cross patterns.
 Best for aggressive off-road applications.
 Hardened alloy steel throughout for maximum life.
 Continuous pattern provides excellent traction in all directions for studs to dig into terrain.
 Smooth, comfortable ride on solid surfaces.



BASE PART#	AVAILABLE MATERIAL SIZES	FULL PART #	WEIGHT/PR	ADJUSTER
2915NSG	10mm (3/8")	2915NSG-10	134Kg (295lbs)	0294
	11mm (7/16")	2915NSG-11	147Kg (324lbs)	
2924NSG	11mm (7/16")	2924NSG-11	141Kg (311lbs)	0296
2927NSG	11mm (7/16")	2927NSG-11	152Kg (336lbs)	
	13mm (1/2")	2927NSG-13	211Kg (465lbs)	
2933NSG	11mm (7/16")	2933NSG-11	164Kg (361lbs)	
	13mm (1/2")	2933NSG-13	229Kg (504lbs)	
2936NSG	13mm (1/2")	2936NSG-13	264Kg (583lbs)	
2945NSG	11mm (7/16")	2945NSG-11	194Kg (427lbs)	
	13mm (1/2")	2945NSG-13	269Kg (594lbs)	
	16mm (5/8")	2945NSG-16	343Kg (757lbs)	
2957NSG	16mm (5/8")	2957NSG-16	428Kg (944 lbs)	
2972NSG	16mm (5/8")	2972NSG-16	468Kg (1032lbs)	

ACCESSORIES



LINK AND SHACKLE ADJUSTER

We also highly recommend the use of tire chain adjusters for securing your chains on the tires as tight as possible. Doing so will greatly prolong the life of your chains!
0294 / 0296 / 0298



HD Tightener screw actuated chain tightening tool
2506HD



Chain tightening tool
 (Type A) **2507**

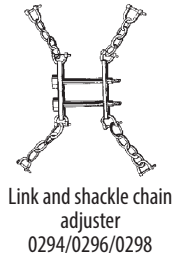
NORDIC NON STUDDED NETLINK - DOUBLE DIAMOND

14mm, 16mm, 18mm, 19mm cross patterns. Hardened alloy steel construction for maximum Life. Double diamond pattern forms a "net" over the tire providing excellent coverage and continual traction. NO STUDS for less aggressive applications.

TIRE SIZE	AVAILABLE MATERIAL SIZES	PART #	WEIGHT/PR
23.5X25	14mm (9/16")	NLN235-14	320Kg (706lbs)
	16mm (5/8")	NLN235-16	347Kg (764lbs)
26.5X25	16mm (5/8")	NLN265-16	415Kg (916lbs)
	18mm (3/4")	NLN265-18	830Kg (1830lbs)
29.5X25	16mm (5/8")	NLN295-16	439Kg (967lbs)
	18mm (3/4")	NLN295-18	666Kg (1469lbs)
35/65-33	16mm (5/8")	NLN3565-16	611Kg (1347lbs)
	19mm (3/4")	NLN3565-19	813Kg (1792lbs)



ACCESSORIES



Link and shackle chain adjuster
0294/0296/0298



HD Tightener screw actuated chain tightening tool
2506HD



Chain tightening tool (Type A) 2507



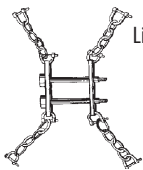
NORDIC STUDDED NETLINK - DOUBLE DIAMOND

14mm, 16mm, 18mm, 20mm studded cross patterns. Alloy steel construction for maximum life. Double diamond pattern forms a "net" over the tire, providing excellent coverage and continual contact with ground surface. Aggressive traction for harsh conditions.

TIRE SIZE	AVAILABLE MATERIAL SIZES	PART #	WEIGHT /PR
1800X25	16mm (5/8")	NLS180-16	387Kg (845lbs)
205X25	14mm (9/16")	NLS205-14	345Kg (761lbs)
23.5X25	18mm (3/4")	NLS235-18	512Kg (1129lbs)
26.5X25	16mm (5/8")	NLS265-16	464Kg (1023lbs)
	18mm (3/4")	NLS265-18	584Kg (1287lbs)
29.5X25	16mm (5/8")	NLS295-16	617Kg (1360lbs)
	18mm (3/4")	NLS295-18	844Kg (1806lbs)
	20mm (13/16")	NLS295-20	858Kg (1892lbs)
2700X49	20mm (13/16")	NLS2700-20	1434Kg (3128lbs)
3300X51	20 mm (13/16")	NLS3300-20	1832Kg (4039lbs)
3600X51	20mm (13/16")	NLS3600-20	2046Kg (4510lbs)



ACCESSORIES



Link and shackle chain adjuster
0294/0296/0298



HD Tightener screw actuated chain tightening tool
2506HD



Chain tightening tool (Type A) 2507



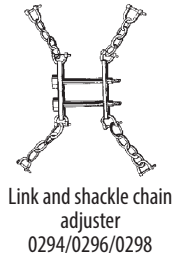
NORDIC NON STUDDED NETLINK - DOUBLE DIAMOND

14mm, 16mm, 18mm, 19mm cross patterns. Hardened alloy steel construction for maximum Life. Double diamond pattern forms a "net" over the tire providing excellent coverage and continual traction. NO STUDS for less aggressive applications.

TIRE SIZE	AVAILABLE MATERIAL SIZES	PART #	WEIGHT/PR
23.5X25	14mm (9/16")	NLN235-14	320Kg (706lbs)
	16mm (5/8")	NLN235-16	347Kg (764lbs)
26.5X25	16mm (5/8")	NLN265-16	415Kg (916lbs)
	18mm (3/4")	NLN265-18	830Kg (1830lbs)
29.5X25	16mm (5/8")	NLN295-16	439Kg (967lbs)
	18mm (3/4")	NLN295-18	666Kg (1469lbs)
35/65-33	16mm (5/8")	NLN3565-16	611Kg (1347lbs)
	19mm (3/4")	NLN3565-19	813Kg (1792lbs)



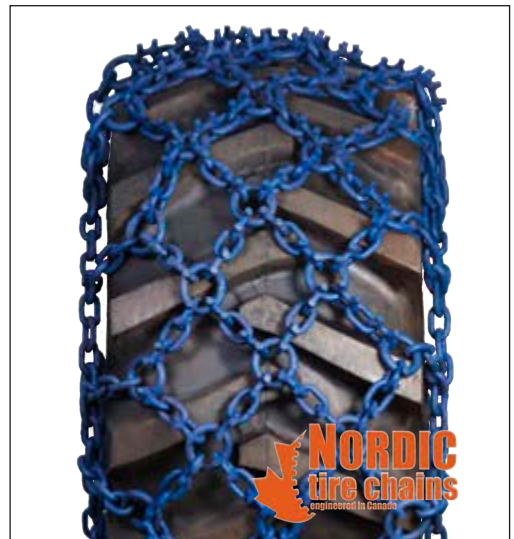
ACCESSORIES



NORDIC STUDDED NETLINK - DOUBLE DIAMOND

14mm, 16mm, 18mm, 20mm studded cross patterns. Alloy steel construction for maximum life. Double diamond pattern forms a "net" over the tire, providing excellent coverage and continual contact with ground surface. Aggressive traction for harsh conditions.

TIRE SIZE	AVAILABLE MATERIAL SIZES	PART #	WEIGHT /PR
1800X25	16mm (5/8")	NLS180-16	387Kg (845lbs)
205X25	14mm (9/16")	NLS205-14	345Kg (761lbs)
23.5X25	18mm (3/4")	NLS235-18	512Kg (1129lbs)
26.5X25	16mm (5/8")	NLS265-16	464Kg (1023lbs)
	18mm (3/4")	NLS265-18	584Kg (1287lbs)
29.5X25	16mm (5/8")	NLS295-16	617Kg (1360lbs)
	18mm (3/4")	NLS295-18	844Kg (1806lbs)
	20mm (13/16")	NLS295-20	858Kg (1892lbs)
2700X49	20mm (13/16")	NLS2700-20	1434Kg (3128lbs)
3300X51	20mm (13/16")	NLS3300-20	1832Kg (4039lbs)
3600X51	20mm (13/16")	NLS3600-20	2046Kg (4510lbs)



ACCESSORIES



NORDIC tire chains

Engineered in Canada

The Nordic Studded Netlink Chain
BUILT FOR OUR OWN BACKYARD



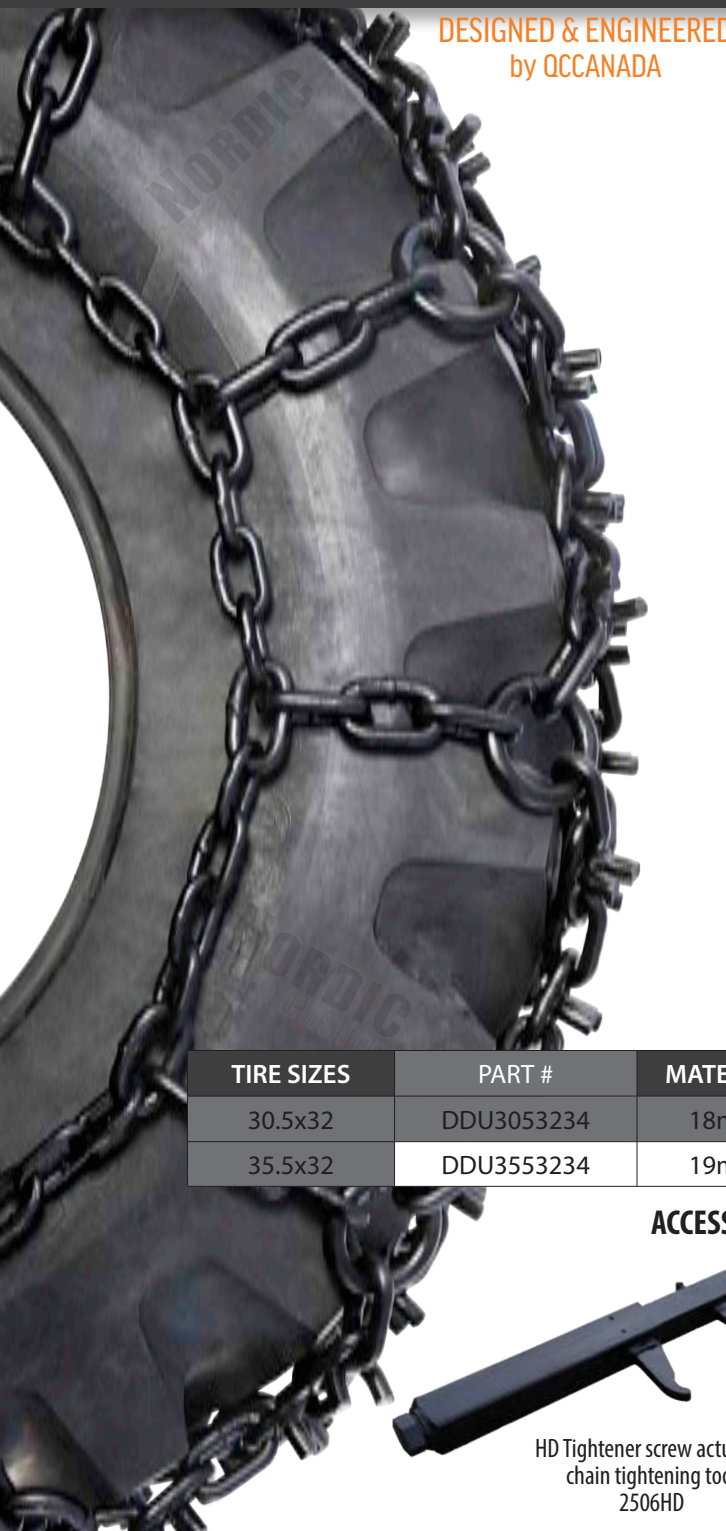
Designed for skidder and loader use.
Heat treated alloy steel for durability.
Double diamond pattern for continuous traction in snow, ice, and mud.
Available in a variety of material sizes and styles depending on tire specifications.

NORDIC U-GRIP DOUBLE DIAMOND NETLINK TOP MOUNT

19mm U-Grip cross patterns. Case hardened alloy steel construction for maximum life.
 Top-mount U-Grip studs for increased traction.
 Double diamond pattern forms a "net" over the tire providing excellent coverage on the tire surface.

NORDIC TOP MOUNT U-GRIP

DESIGNED & ENGINEERED
 by QCCANADA



TIRE SIZES	PART #	MATERIAL SIZES	WEIGHT
30.5x32	DDU3053234	18mm (3/4")	668Kg (1473lbs)
35.5x32	DDU3553234	19mm (3/4")	742Kg (1636lbs)

ACCESSORIES



HD Tightener screw actuated chain tightening tool
 2506HD



Chain tightening tool (Type A) 2507



NORDIC STUDDED DOUBLE DIAMOND NETLINK

16mm, 18mm, 20mm studded cross patterns. Hardened alloy steel construction for maximum life. Double diamond pattern forms a "net" over the tire providing excellent coverage and continual contact with ground surface. Aggressive traction for harsh conditions.

TIRE SIZES	PART #	MATERIAL SIZES	WEIGHT
23.1x26	NLS231-16	16mm (5/8")	405Kg (849lbs)
	NLS231-18	18mm (3/4")	499Kg (1100lbs)
24.5x32	NLS245-16	16mm (5/8")	463Kg (1020lbs)
	NLS245-18	18mm (3/4")	584Kg (1287lbs)
30.5x32	NLS305-18	18mm (3/4")	662Kg (1460lbs)
	NLS305-20	20mm (13/16")	900Kg (1984lbs)
35.5x32	NLS355-18	18mm (3/4")	844Kg (1860lbs)
	NLS355-20	20mm (13/16")	900Kg (1984lbs)
73x44x32	NLS730-18	18mm (3/4")	763Kg (1682lbs)

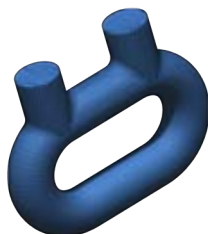


ACCESSORIES



HD Tightener screw actuated chain tightening tool 2506HD

Chain tightening tool (Type A) 2507



NORDIC STUDDED TRIPLE DIAMOND NETLINK

16mm, 18mm, 20mm studded cross patterns. Hardened alloy steel construction for maximum life. In a triple diamond pattern forms a "net" over the tire providing maximum coverage and continual contact with ground surface. Aggressive traction for harsh conditions.

TIRE SIZES	PART #	MATERIAL SIZES	WEIGHT
30.5x32	NLTS305-18	18mm (3/4")	878KG (1936lbs)
	NLTS305-20	20mm (13/16")	882Kg (1944lbs)
35.5x32	NLTS355-18	18mm (3/4")	967Kg (2131lbs)
	NLTS355-20	20mm (13/16")	1108Kg (2442lbs)
73x44x32	NLTS730-16	16mm (5/8")	724Kg (1596lbs)
	NLTS730-18	18mm (3/4")	980Kg (2160lbs)
	NLTS730-20	20mm (13/16")	1111Kg (2449lbs)

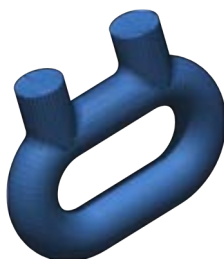


ACCESSORIES



HD Tightener screw actuated chain tightening tool 2506HD

Chain tightening tool (Type A) 2507



NORDIC U-GRIP DOUBLE DIAMOND NETLINK

16mm, 18mm, 20mm U-Grip cross patterns. Hardened alloy steel construction for maximum life. Double diamond pattern forms a "net" over the tire providing excellent coverage and continual contact with ground surface. U-Grip design provides aggressive traction as well as chain stability on the tire (less possibility of chain rolling or twisting.)

TIRE SIZES	PART #	MATERIAL SIZES	WEIGHT
23.1x26	NLU231-16	16mm (5/8")	390Kg (860lbs)
30.5x32	NLU305-18	18mm (3/4")	676Kg (1490lbs)
	NLU305-20	20mm (13/16")	769Kg (1696lbs)
35.5x32	NLU355-18	18mm (3/4")	859Kg (1894lbs)
	NLU355-20	20mm (13/16")	913Kg (2013lbs)
73x44x32	NLU730-18	18mm (3/4")	777Kg (1712lbs)

ACCESSORIES



HD Tightener screw actuated chain tightening tool 2506HD

Chain tightening tool (Type A) 2507



NORDIC U-GRIP TRIPLE DIAMOND NETLINK

16mm and 20mm U-Grip cross patterns. Hardened alloy steel construction for maximum life. Triple diamond pattern forms a "net" over the tire providing maximum coverage and continual contact with ground surface. U-Grip design provides aggressive traction as well as chain stability on the tire (less possibility of chain rolling or twisting.)

TIRE SIZES	PART #	MATERIAL SIZES	WEIGHT
35.5x32	NLTU355-20	20mm (13/16")	1265Kg (2789lbs)
73x44x32	NLTU730-16	16mm (13/16")	785Kg (1731lbs)

ACCESSORIES

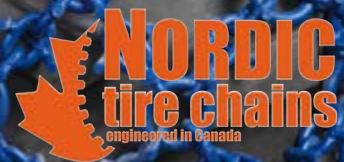
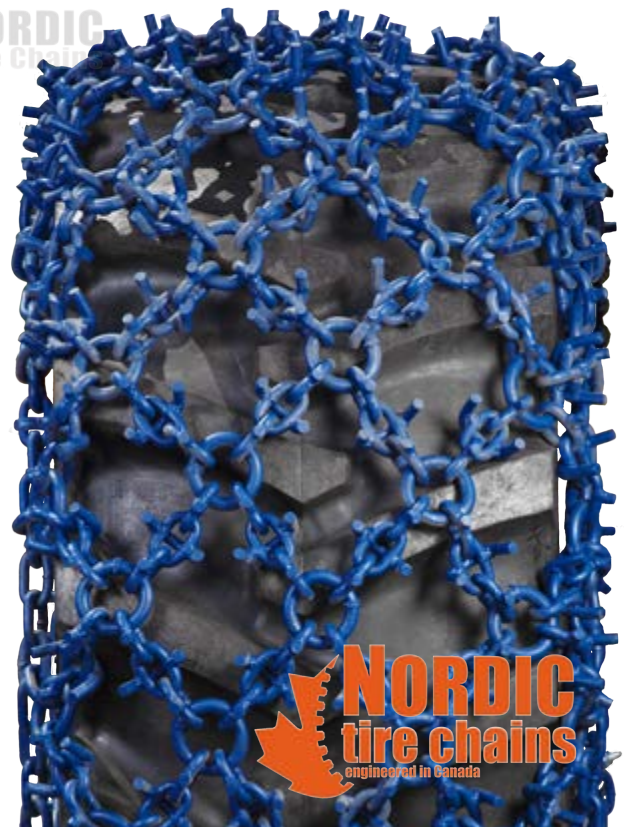


HD Tightener screw actuated chain tightening tool 2506HD

Chain tightening tool (Type A) 2507



NORDIC
Tire Chains

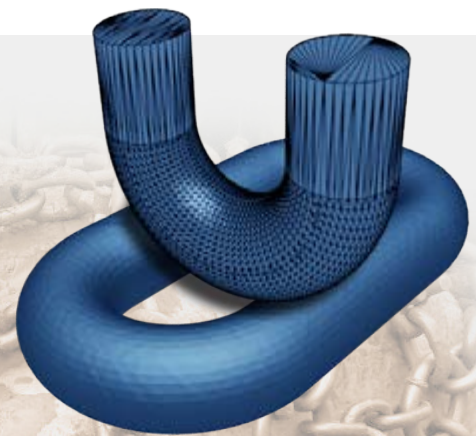


Instruction Manuals included on most skidder chains and PDF versions available online via www.qccanada.com

SKIDDER

NORDIC TOP MOUNT U-GRIP FORWARDER CHAIN

U-grip studs help stabilize the chain on the tire to prevent rolling/ twisting, and provides the ultimate in aggressive traction for the harshest conditions. Triple diamond configuration forms a wide "net" over the tire, providing the best coverage/ tire protection and continual contact with the ground. Carburizing heat treatment allows for a tool hard surface and a softer core for flexibility. No need to cut out patterns during the life of the chain and minimal adjustments required. Draw chain allows for easy tightening.



ACCESSORIES



HD Tightener screw actuated
chain tightening tool
2506HD



Chain tightening tool
(Type A) 2507

TIRE SIZES	PART #	MATERIAL SIZES	WEIGHT
710/4X26.55	TDU7104558	16mm (5/8")	492Kg (1084lbs)
750/55X26.5	TDU7505558	16mm (5/8")	597Kg (1315lbs)

NORDIC FULLY FLOATING MULTI-RING

The Nordic fully floating multi ring provides aggressive traction and durability. All rings are fully floating, permitting the rings to self-clean. The number of grouser lugs provided ensures un-matched traction in any terrain.



- Extremely aggressive in deep snow or mud.
- Self cleaning.
- Larger material size for greater strength and durability.



RING	PITCH	OUTER DIAMETER	GROUSER DIMENSIONS		
			T	H	W
MAIN RING	38mm	280mm	25mm	64mm	76mm
SECONDARY RING	28mm	180mm	19mm	50mm	50mm

NORDIC
Tire Chains

TIRE SIZES	PART #	MATERIAL SIZES	WEIGHT
30.5X32	RAFT305-25	25mm (13/16")	1001Kg (2206lbs)
35.5x32	RAFT355-25	25mm (13/16")	1116Kg (2462lbs)
73x44x32	RAFT730-25	25mm (13/16")	1117Kg (2464lbs)

ACCESSORIES



HD Tightener screw actuated chain tightening tool 2506HD

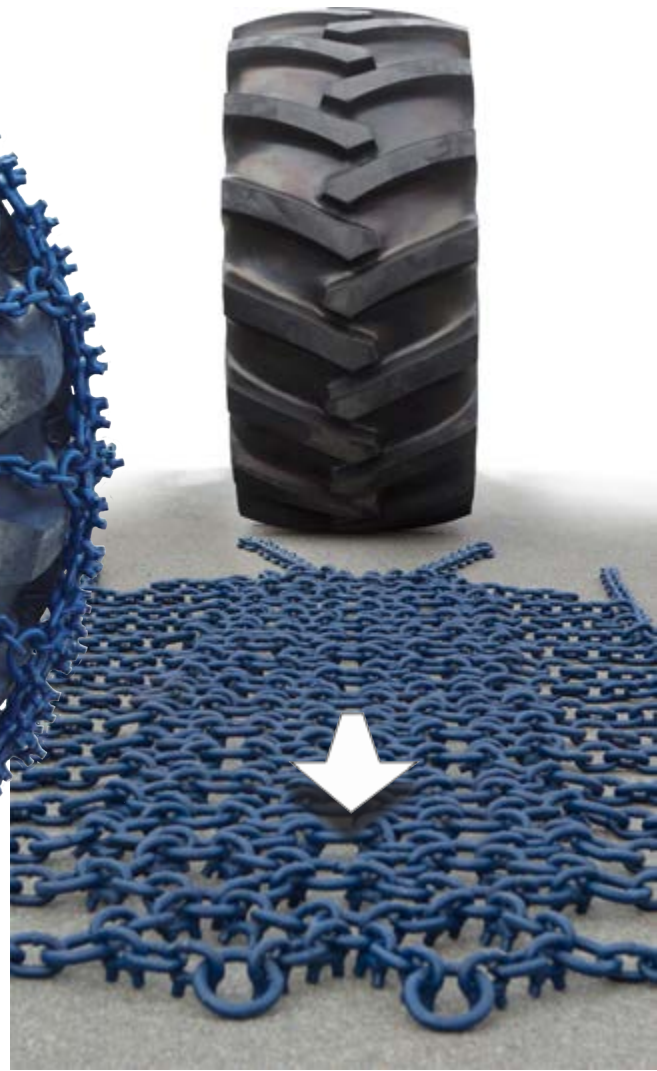


Chain tightening tool (Type A) 2507

SKIDDER



Netlink Style Chain
INSTALLATION GUIDE



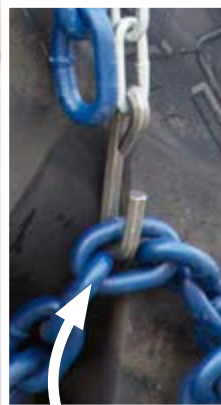
1 Lay the chains out, studs down and spread evenly. Drive machine to the end of the chain.



SKIDDER



Installation Chain
(Not Included)



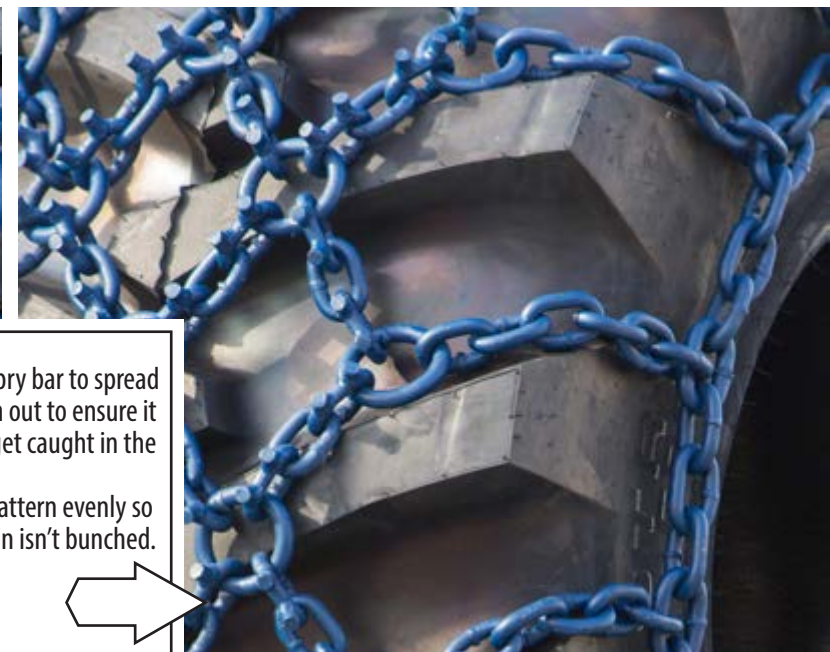
2 Hook up your installation chain (not included) to your tag chains. You can also use a wire rope sling or rope as well.



3 Rotate the machine backwards to pull the chain over the tire. You may want to have a second person assist you to ensure the chain wraps evenly around the tire.



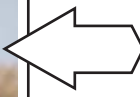
4 Use a pry bar to spread the chain out to ensure it doesn't get caught in the lugs. Spread pattern evenly so that chain isn't bunched.



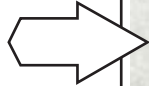
SKIDDER



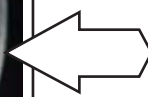
5 Stop the machine in this position.



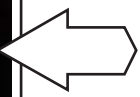
6 Connect your side chain



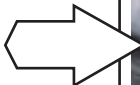
7 Hook up your tag chains to the side chain with shackles or plug couplers provided.



8 Hook the tag chains in a manner that follows the fixed side chain.



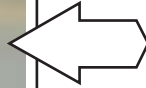
9 Use a tensioning device (not included) to bring the rings close together. This will tighten up the main pattern.



SKIDDER



10A
If you can, couple the chain together ring to ring with either a shackle or plug coupler provided.



10B
If you can't connect ring to ring, pull your tail chain through the ring and connect to the side chain.



12
Last step is to cut your side chain or tie it back so it doesn't flail. Also, if you connected your main pattern ring to ring, cut the tails completely off. (Remove installation chain/rope)



11
Tighten your side chain. Use the tensioning device (not included) to tighten. You will be able to remove a lot of slop in the bottom of the chain just by tightening one link per side.



13
Move the skidder forward and backward numerous times to ensure the chain is fully seated. Refer back to Steps 10 - 12 if the chains need further tightening.



PRODUCTS SUPPLIED



OPTIONAL TOOLS RECOMMENDED FOR INSTALLATION





TrackClaws

LESS DOWNTIME

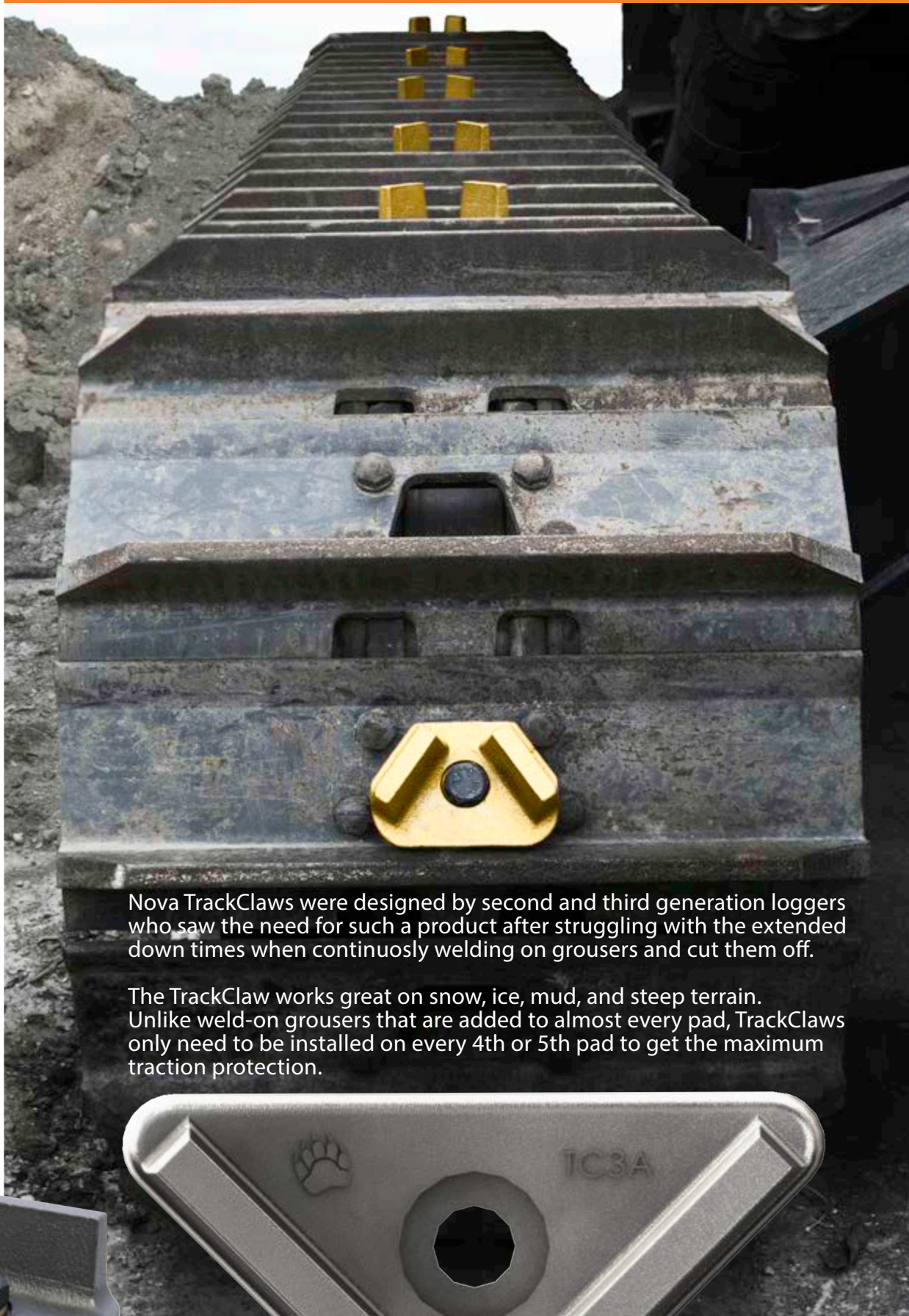
No need to pull equipment off the job for your welder. Simply bolt on the TrackClaws onsite with a ratchet and socket. Easily install and remove to cross roads.

SAVE MONEY

TrackClaws are very cost effective way to add quick traction to your machinery in the field. Made from hardened steel to provide a durability. TrackClaws can be reused many times.

SAFETY

TrackClaws reduce slippage which can lead to overturned equipment or other worksite accidents. TrackClaws unique design improves traction considerably and reduces lateral sliding.

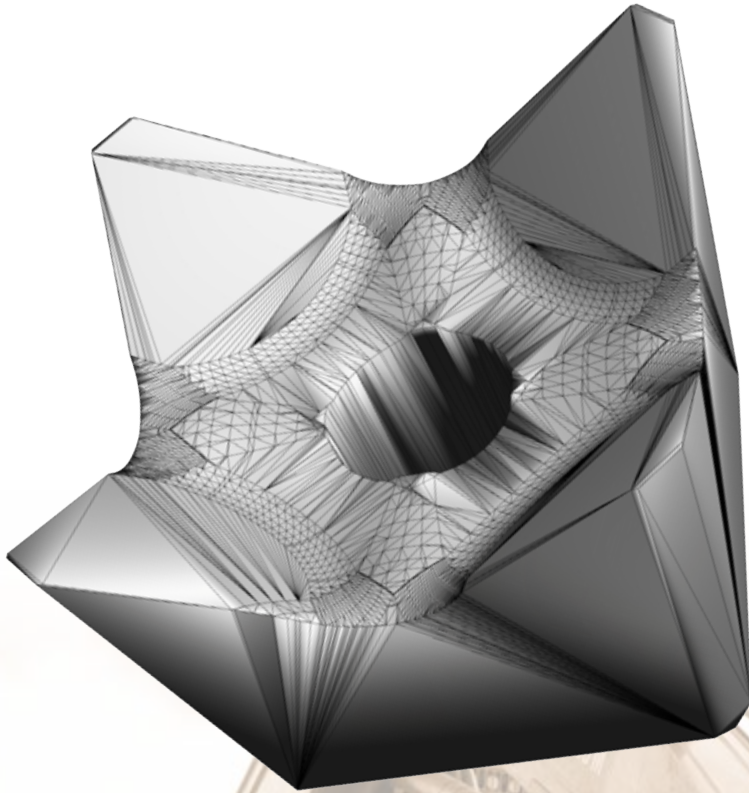


Nova TrackClaws were designed by second and third generation loggers who saw the need for such a product after struggling with the extended down times when continuously welding on grousers and cut them off.

The TrackClaw works great on snow, ice, mud, and steep terrain. Unlike weld-on grousers that are added to almost every pad, TrackClaws only need to be installed on every 4th or 5th pad to get the maximum traction protection.



SAW TEETH



HARDENED HEAT TREATED ALLOY STEEL | EASY TO SHARPEN | DURABLE | ECONOMICAL

Nova saw teeth are made with high grade hardened, heat-treated alloy steel. The tips can also be sharpened on the blade reducing downtime. A dependable alternative to OEM products. Nova saw teeth have been carefully designed to offer quality at affordable prices.

PART #	TOOTH TYPE	TOOTH KERF	SHANK DIAMETER	SHANK LENGTH	BOLT DIAMETER	BOLT TORQUE SETTINGS
GET-Q10233T	No Shank	2 5/16" / 58.7mm	No Shank	No Shank	1"	300 ft/lbs
GET-Q10103T	No Shank	2" / 50.8mm	No Shank	No Shank	3/4"	200 ft/lbs

BOLT for: GET-Q10233T

PART #	TYPE
GET-122844A450	Hex Bolt





GROUNDMAX

48 Bo-Mont Drive
Elmsdale, NS
B2S 2B6

Tel: (902) 233-0356
Fax: (902) 883-7539

AUTHORIZED DEALERS OF



www.groundmax.ca

